

## **Firmware update LH101(-R) to version 2.1**

Basically, all LH101 and LH101-R hand controllers can be updated to the latest software. For some older LH101s from the first production series, it is necessary to update the bootloader to version 3.2 beforehand.

To do this, the special software Bootloaderupdater must first be installed, then the firmware update can be carried out.

### **How do I know if I need to update the bootloader?**

You can detect this by disconnecting an LH101 from the XpressNet, pressing and holding the rotary knob and reconnecting it to the XpressNet.

- 1.) If the display shows a text such as: "BLV3.1: search USB", you can skip step 4.
- 2.) If your handset controller now shows an empty display, a bootloader update (step 4) must first be carried out. To do this, proceed as follows:

If you have not already done so, download the current CV editor including data package (Attention: two separate downloads!) from our website <https://www.lenz-elektronik.de/digital-plus/cv-editor.php> and install them.

Follow these instructions with step 1 to step 5 or check if steps 1 and 2 have already been done earlier.

### **Step 1: Preparation for the firmware update**

For the firmware update of the LH101(-R) you need (except for the hand controller):

- **Computer with Windows® operating system (from Windows 7®)**
- **a free USB port on this computer**
- **the "CV Editor" software and the "Data Package " for the CV Editor:**  
You can download the software "CV Editor" together with the associated data package from the website of Lenz Elektronik GmbH: <https://www.lenz-elektronik.de/digital-plus/cv-editor.php>  
**Install this software and the data package on your PC according to the information enclosed in the ZIP files.**
- **Special cable for connecting the LH101 to the USB port of the computer:**  
You can obtain this cable directly from Lenz.

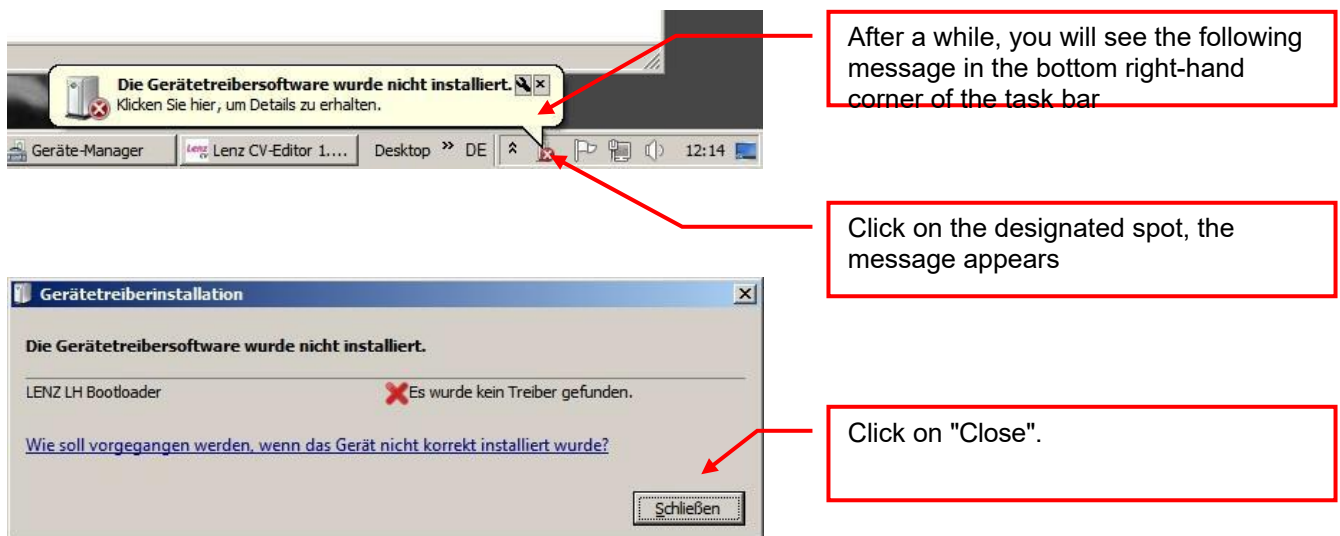
## Step 2: Installing the driver for the LH101(-R)

You only need to carry out this step 2 **when** connecting the LH101(-R) to your computer for the **first time**. If you want to install further firmware updates later, start directly with step 3.

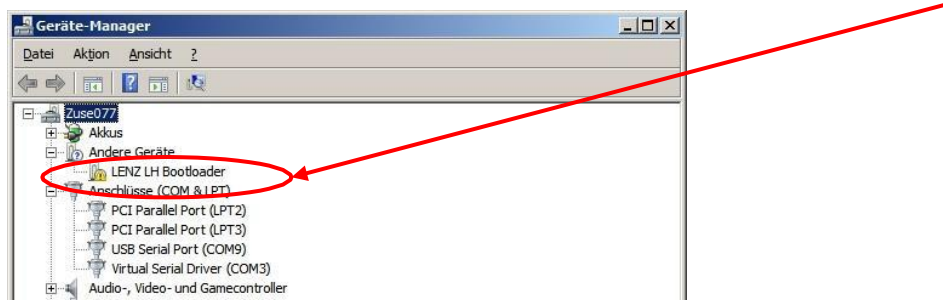
Proceed as follows:

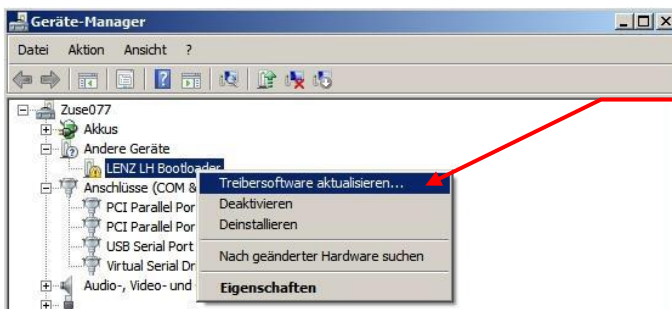
- Plug the special cable into a free USB port on your computer.
- Press the rotary knob on the LH101(-R) and HOLD IT DOWN. Connect the cable to the LH101(-R).

**The display of the LH101(-R) remains dark!**

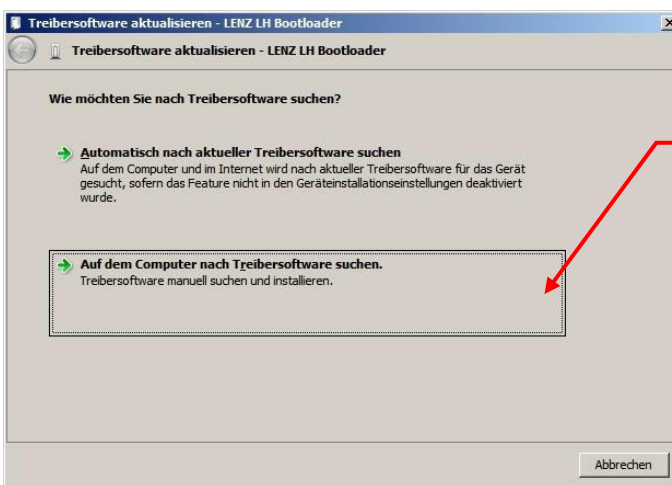


Now open the device manager and look for the entry "LENZ LH Bootloader".

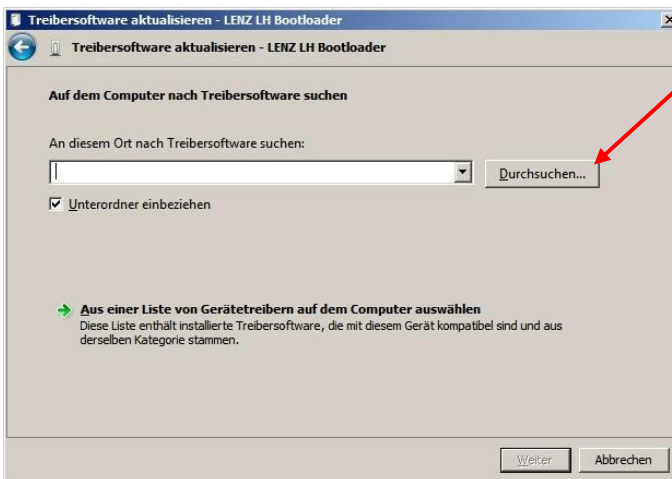




Click RIGHT on this entry and select "Update driver software".



In the following window, select "Search for driver software on the computer".

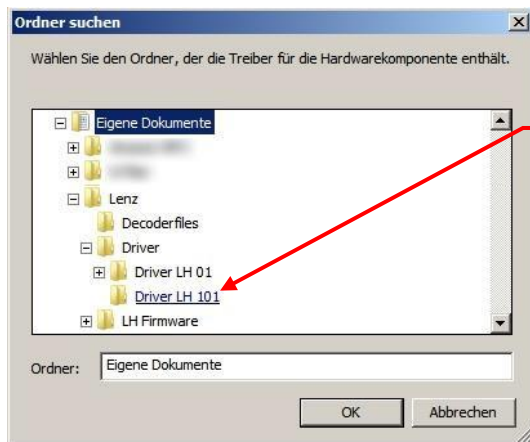


Click on "Browse..."

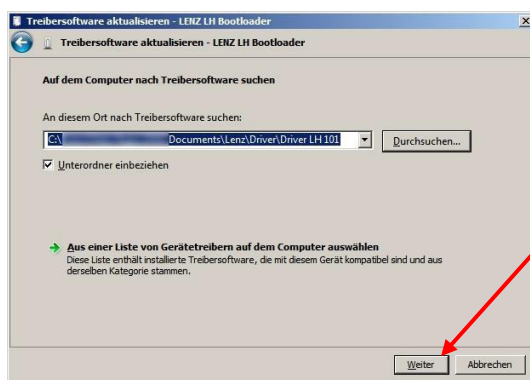
The required driver was installed during the installation of the CV-Editor data package under

**Own documents\Lenz\Driver\Driver LH 101**

filed:

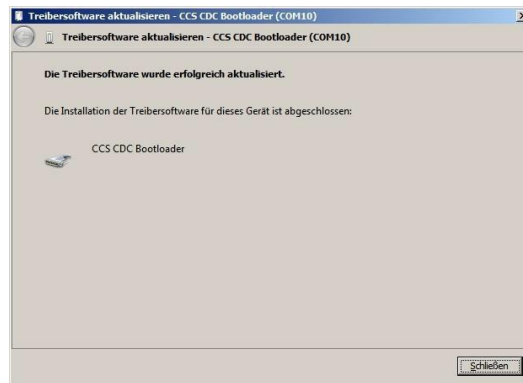
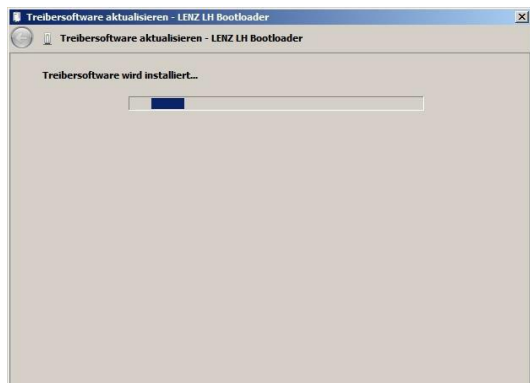


Select this folder and click on "OK".

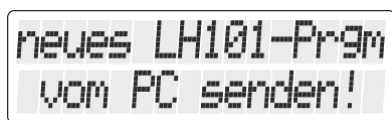


In the following window, click on "Next":

The driver software is now installed:



Now click on "Close". The driver for the LH101(-R) is now installed on your computer, you can see this by the display on the LH101(-R):



The LH101(-R) is now ready for firmware update.

**Continue with step 4**

## **Step 3: Connect the hand controller to the PC**

If you have already installed the driver for the LH101(-R)

- Plug the special cable into a free USB port on your computer.
- Press the rotary knob on the LH101(-R) and HOLD IT DOWN. Connect the cable to the LH101(-R).

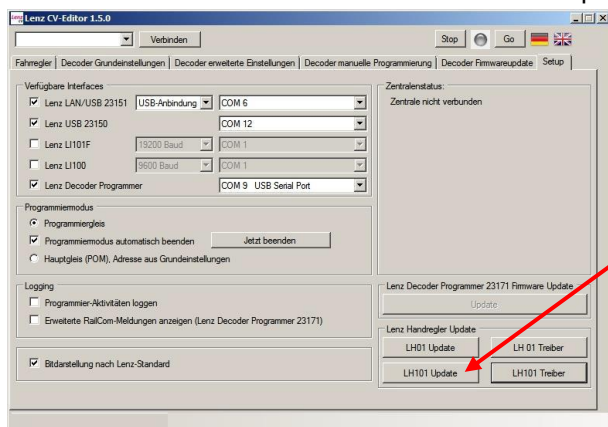
On the display of the LH101(-R) appears the indication

neues LH101-Prgram  
vom PC senden!

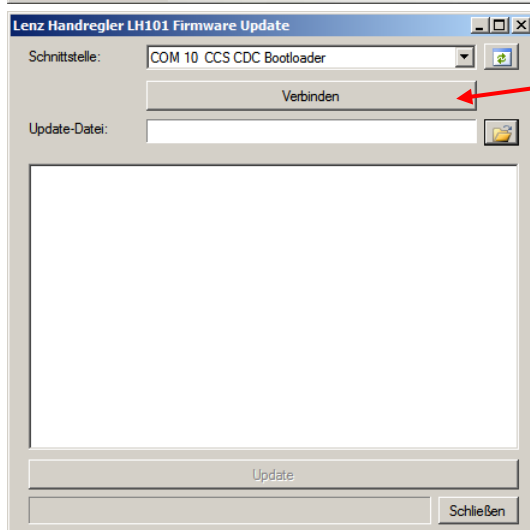
The LH101(-R) is now ready for firmware update.

## **Step 4: Install bootloader update (Attention: only if necessary, cf. page 1)**

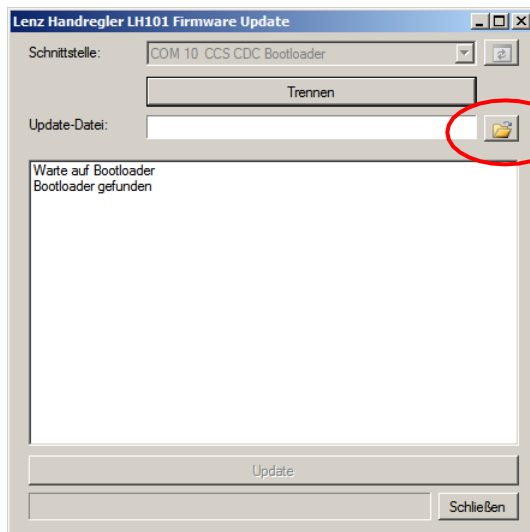
Start the CV Editor software and select the "Setup" tab.



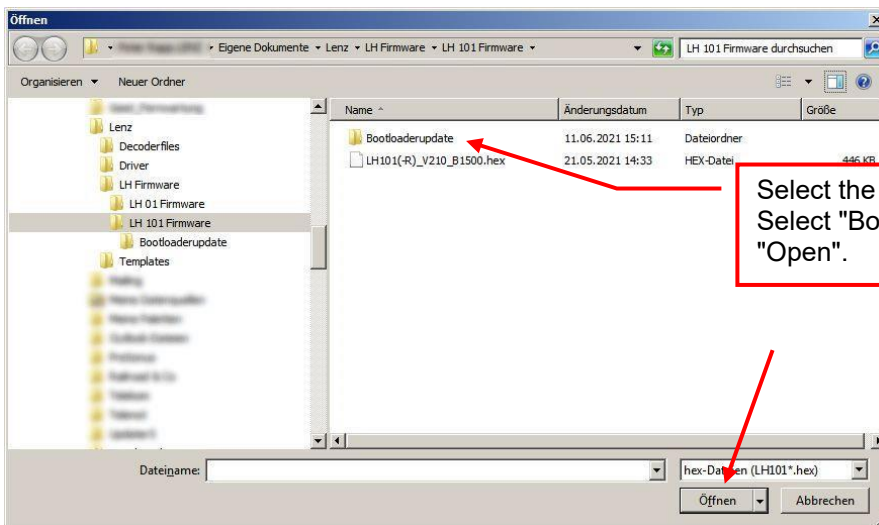
Click on "LH101 Update"



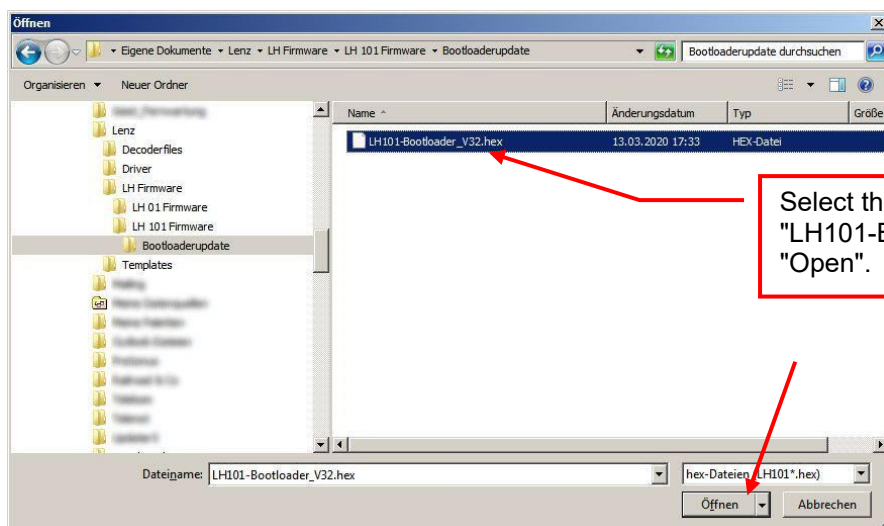
In the following window, click on "Connect".



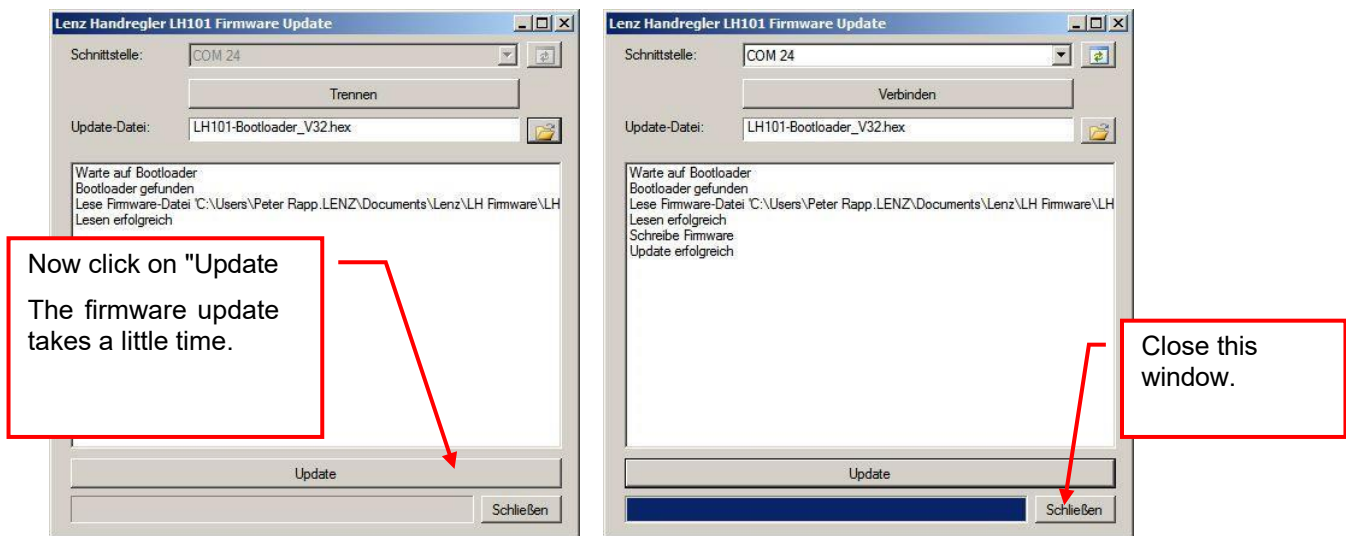
Click on the "Open file" icon



Select the folder  
Select "Bootloader update" and click on "Open".



Select the bootloader update  
"LH101-Bootloader\_V32" and click on "Open".



After the bootloader has been successfully updated, you can read "Pressing the rotary knob starts the update" in the display of the handset control. Please confirm this by pressing the rotary knob. After a few seconds the following message appears: "Now upload new LH prog. Install".

**This completes the bootloader update.**

To continue with step 5, disconnect the LH101 from the PC.

Let's move on:

- Press the rotary knob on the LH101(-R) and HOLD IT DOWN. Reconnect the cable to the LH101(-R).

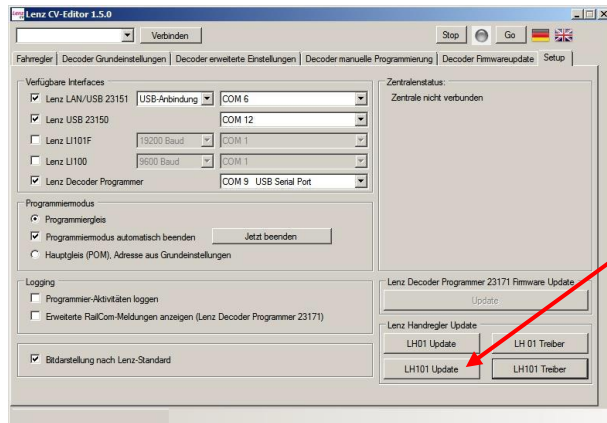
On the display of the LH101(-R) appears the indication

```
neues LH101-Prgrm
vom PC senden!
```

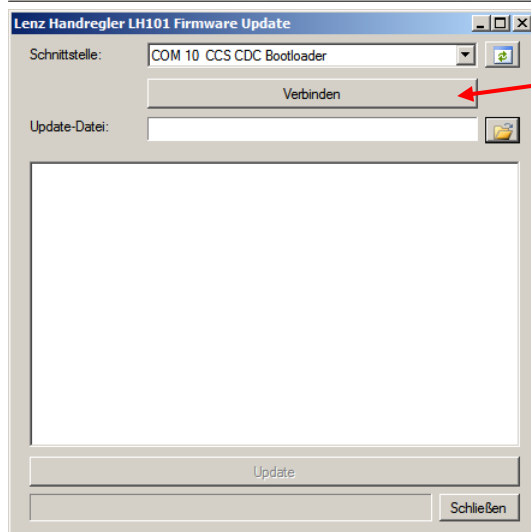
Continue with step 5 (you are almost there).

## Step 5: Install firmware

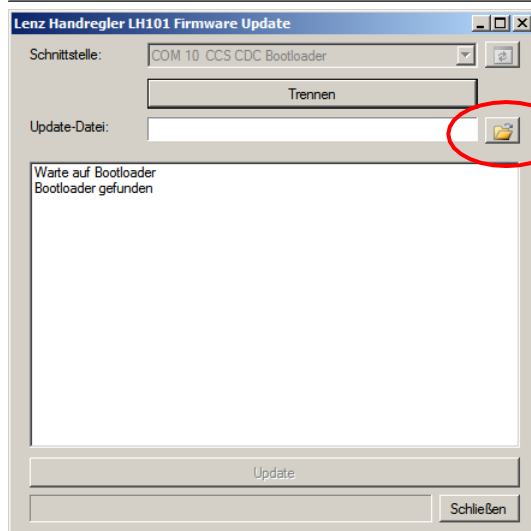
Start the CV Editor software and select the "Setup" tab.



Click on "LH101 Update"

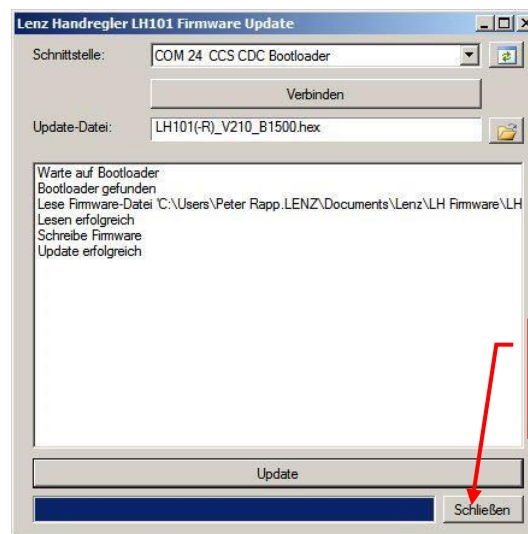
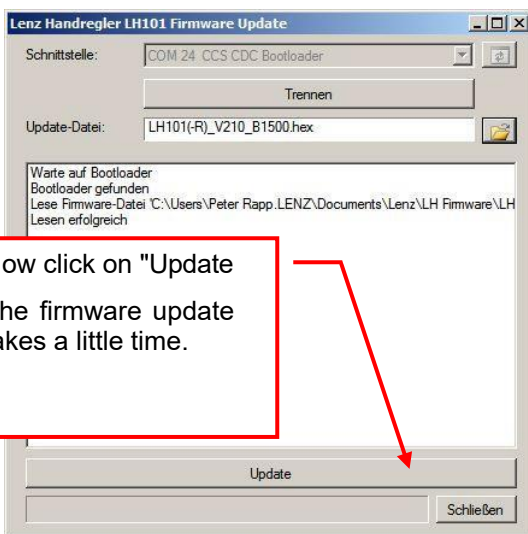
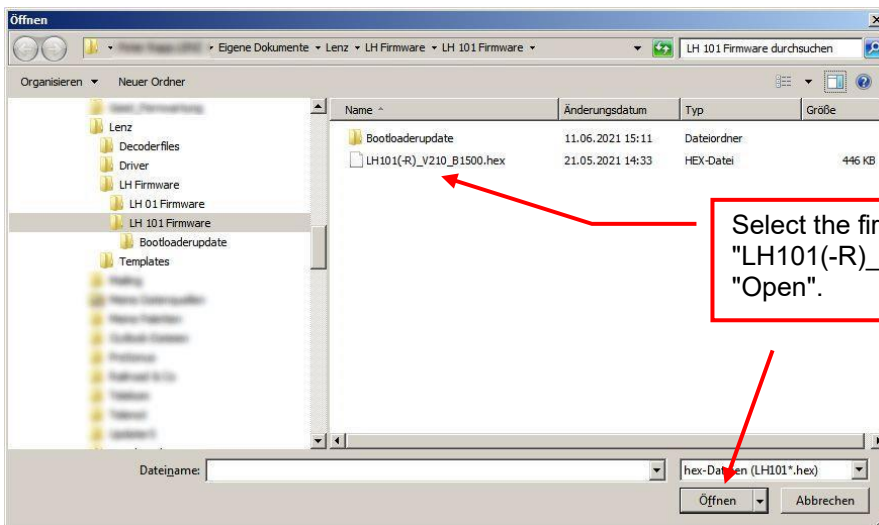


In the following window, click on "Connect".



Click on the "Open file" icon





On the display of the LH101(-R) you will now see the message

Keine Verbindung  
zur Zentrale

Disconnect the cable from the LH101(-R).

**This completes the firmware update.**